

- Close the door tight by slamming it shut a few times. The flange should leave an even indentation near the center of the gasket. Check the fit by closing the door on a 1” strip of paper. It should be held firmly. Work material around opening to ensure a tight fit. Vertical and horizontal adjustments can be made by adding or removing shims between the hinge spacers and the door attach angle.
- ***It is extremely important to get an air tight fit when the gasket is new. Once it hardens from the creosote deposits, successful adjustments are very unlikely.*
- Install blower on door. It may be necessary to gasket the blower and door flange to prevent air leakage.
- Disconnect power to the stove.
- Bring in power from the primary combustion fan on the back of the stove. Remove junction box cover on back fan assembly. Attach the red wire from the wires provided to the red & black wire in the junction box. Attach white wire to white & black wire in junction box. Connect remaining green wire to other green wire in the junction box.
- Open junction box on secondary fan assembly. Connect red wire to red & black wire in junction box. Connect white wire to white & black wire in junction box. Connect remaining green wire to other green wire in junction box.
- Re-light the fire and enjoy the clean burn of your new Eco-One by Aqua-Therm.

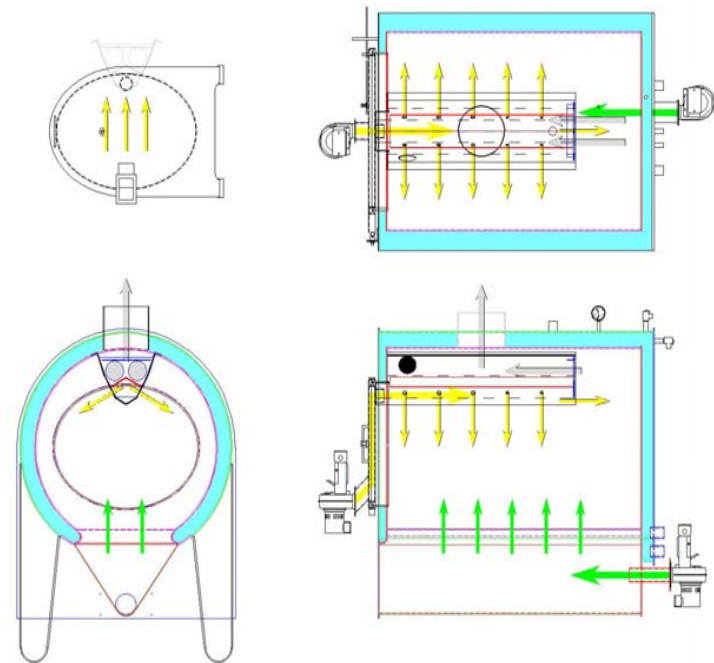
Maintenance: At the end of the season, remove the round plug on the baffle (see Pic 5) and blowout the baffle with compressed air. Wear necessary protective gear.



Pic 8

Eco-One

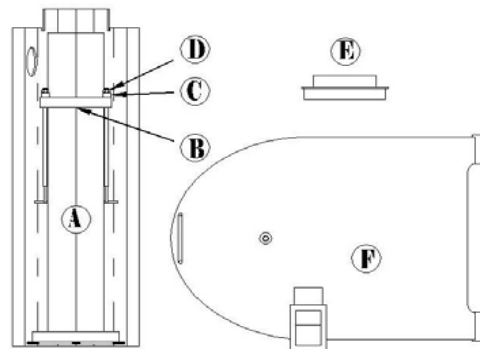
Installation Instructions



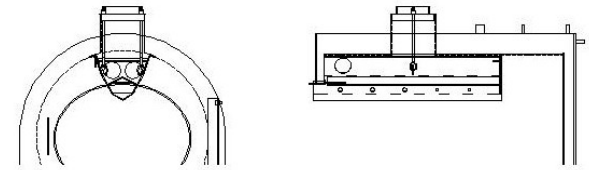
Eco-One

Contents:

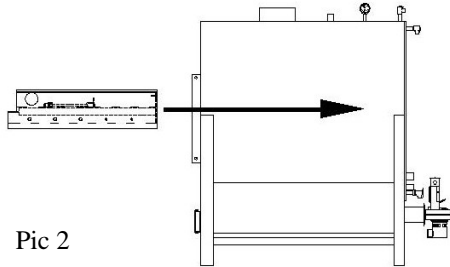
- A. Eco-One Baffle
- B. Lifting Bar (7" x 1" x 1")
- C. Bushing (2)
- D. Nut (2)
- E. Chimney Adapter (8" to 6" reducer)
- F. Door with Blower Door gasket (not pictured)
- Wiring in metal conduit (not pictured)



Pic 1

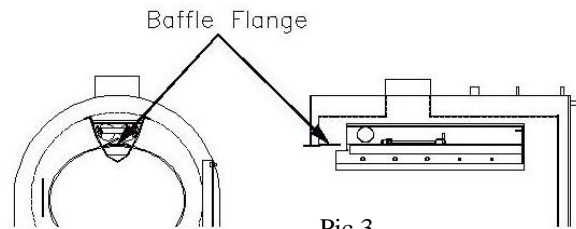


Pic 5



Pic 2

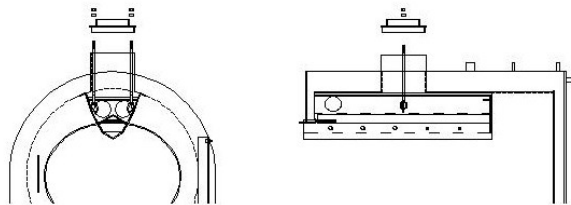
Please note:
If you are running an 8" inner dimension on your chimney, you will need to run a 6" inner dimension chimney with the Eco-One.



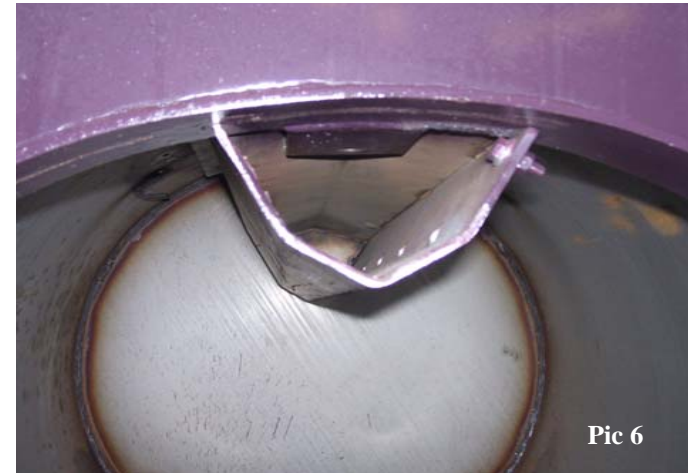
Pic 3

- Instructions:**
- Remove front door, chimney and original upper baffle.
 - Put the provided chimney adapter on top of stove.
 - Place baffle in stove. Reach down through the chimney opening and pull up the Eco-One. Set front of baffle on baffle flange. See Pic 2 & 3.
 - Remove the lifting bar from the bolts.
 - Feed the bolt through the chimney adapter that was provided and tighten the nuts. This will cinch up the baffle to the top of the stove. Re-tighten the nuts on the chimney adapter after a week of use.

***It may be helpful to notch the sides of the double walled chimney to tighten the bolts when needed.*

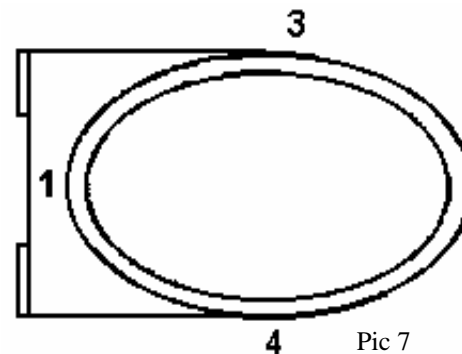


Pic 4



Pic 6

- Install new front door, this may require some shimming in certain spots to make it fit properly.
- Install new gasket in door. To do this: Place the ends of the gasket in the channel at position 1 as shown in Pic 7. Find the middle of the gasket and insert in the channel at position 2. Locate the middle of the gasket top and bottom and insert it into the channel at 3 and 4. Now compress the remaining gasket material evenly between each point and



Pic 7

- press into the channel.
- Loosen the nuts on the two door hinge bolts. Slide the door assembly in the slotted angle. When the door is closed and locked, the gasket should make uniform contact with flange around the door opening.